



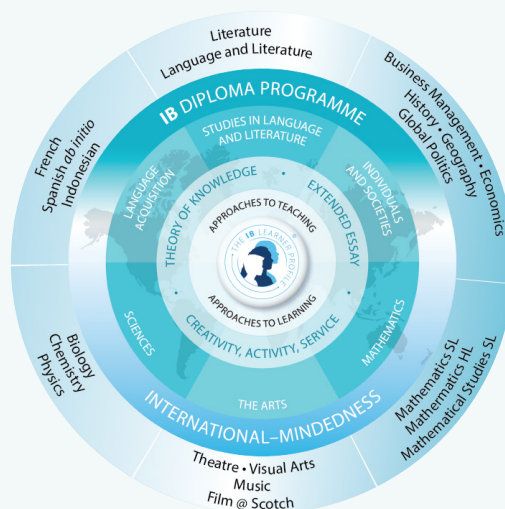
The International Baccalaureate Diploma

In Years 11 and 12 students may opt to take the prestigious International Baccalaureate Diploma rather than the state based WACE/ATAR pathway.

At a Glance

The IB Diploma is an exciting, holistic, rigorous and internationally recognised course of study. The structure of the Diploma programme provides both depth and breadth of academic study.

The IB Diploma is designed as an integrated programme; students are encouraged to develop their creativity, critical thinking skills and global awareness as well as to be active members of their communities and give service to others.



The structure of the Diploma programme provides both depth and breadth of academic study.

The IB Diploma is designed as an integrated programme; students are encouraged to develop their creativity, critical thinking skills and global awareness as well as to be active members of their communities and give service to others. The IB Diploma encourages breadth of study by requiring students to take six subjects from a minimum of five 'groups'.

Three subjects are taken at 'Standard Level' (equivalent to approximately 150 hours of study) and three are taken at 'Higher Level' (equivalent to approximately 240 hours of study). This structure allows for both breadth and depth as the selection of Higher Level subjects gives students the opportunity to focus on their interests and their passions.

Students study courses in:

- English Literature or Language and Literature
- A second language
- Humanities
- Science
- Mathematics
- The Arts or additional subject from any of the other groups.

In addition to the six academic subjects, students also undertake a common 'core'.

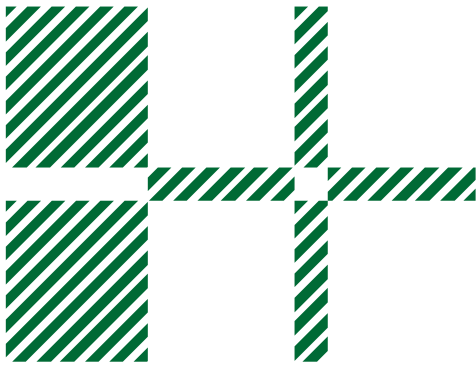
The core contains:

Creativity, Activity and Service (CAS) which encourages students to participate in a variety of co-curricular activities, give back to their communities and develop international awareness by 'thinking global and acting local'.

Extended Essay (EE) gives students the opportunity to develop a research question on an area of interest and produce a 4,000 word academic report.

This flagship element of the programme sets Diploma students apart at university, as they develop the skills of extended academic inquiry and writing.

Theory of Knowledge (ToK) is a 100 hour course in which students are taught to question how we know what we know and to think critically about the reliability of different kinds of knowledge.



COMMONLY ASKED QUESTIONS

Question: Is the IB Diploma only for the academically elite?

No, at PLC we encourage all students to consider the Diploma pathway. Good Diploma students are enthusiastic about learning, interested in the world and ready to challenge themselves.

How is the Diploma assessed?

Subjects have examinations at the end of Year 12 plus assessments that are produced during the two-year course. Final achievement is given a level of between 1 and 7, giving students a potential 42 points for their subjects. The core components contribute up to 3 bonus points, making the highest Diploma score possible 45 points.

Question: Is the IB Diploma accepted by Australian universities?

Yes, all Australian universities accept the IB Diploma. In most cases, the IB Diploma 'score' out of 45 is converted into an ATAR for Australian university entrance. However, some universities now accept a score without an ATAR conversion. For example: the University of Western Australia (UWA) requires Diploma students to have 26 points for entry into a Bachelor course.

Is this achievable?

The average Diploma score worldwide is 29 points. In 2019, the average PLC Diploma score was 34 points (the ATAR equivalent of 92.10), significantly higher than the UWA requirement. To date, every PLC Diploma student has qualified for entrance into UWA.

Question: Is there an advantage to taking Diploma if my daughter wants to stay in WA and not go overseas?

Absolutely. The Diploma Programme develops the core skills students need to be successful at university. These include:

- an understanding of and appreciation for research
- presentation and communication skills
- critical thinking
- report writing
- international mindedness and cultural understanding
- time management

Question: If my daughter is going to university overseas does the IB Diploma offer me any advantages over WACE?

UK students complete A Levels (which are taken in Year 12 and Year 13); these are challenging academic courses beyond the scope of many Australian Year 12 courses.

The Diploma programme (especially EE, TOK and HL subjects) will put your daughter on more equal terms with students in the UK when she starts university. Many US universities offer College credit for Diploma Courses. The IB actively engages with US universities to ensure Admissions Officers are familiar with the programme.

WHAT IB RESEARCH SHOWS

Several studies show that compared to their peers, IB students tend to go to university at higher rates, go to more selective universities, and perform better once there.

For example:

- Former DP students in the USA are significantly more likely to attend a 'selective' or 'highly selective' institution compared to the average USA college-goer.
- In the UK, they are more than twice as likely attend a top 20 university than the average A level student.
- Feedback collected from a wide range of IB graduates suggests that IB students have an easier time adjusting to university studies.
- Surveys of university and college admissions staff in the US, the European Union (EU) and Australia show that they are familiar with the programme and hold it in very high esteem.
- An analysis of the recognition policies of the top universities in the US reveals that most of these institutions grant credit or advanced standing for high performance in DP courses.